



NASA's Partnerships to Observe the Ocean

Dr. Eric Lindstrom

*NASA Headquarters,
Oceanography Program Scientist
and*

Dr. Sirpa Häkkinen

NASA Goddard SFC

PORSEC

December 3, 2004

Exploring Our Ocean Planet from Space



NASA Oceanography
oceans.nasa.gov



Ocean Observations

Status of remote sensing technologies to observe geophysical variables of Earth's oceans:

- Sea surface temperature - operational -> **research**
- Ocean surface wind research to operational
- Ocean surface topography research to operational
 - high resolution OST (wide swath ocean altimeter)- **research**
- Ocean mass/gravity - **research**
- Sea surface salinity - **research**
- Mixed Layer Depth - **research**
- Ocean color - chlorophyll-a research to operational
- Fluorescence - **research**





Established Partnerships With Other Space Agencies

- Ocean surface wind - NSCAT - QuikSCAT/SeaWinds - **JAPAN**
- Ocean surface topography - TOPEX/Poseidon - JASON -OSTM - **FRANCE**
- Gravity - GRACE - **GERMANY**
- Sea surface salinity - Aquarius/SAC-D - **ARGENTINA** - -
 - Collaboration with HYDROS- NASA and SMOS - **ESA**
- Sea surface temperature - **GHRSSST-PP (Global High-Resolution SST Pilot Project)** - International effort





Sea Surface Temperature (SST)

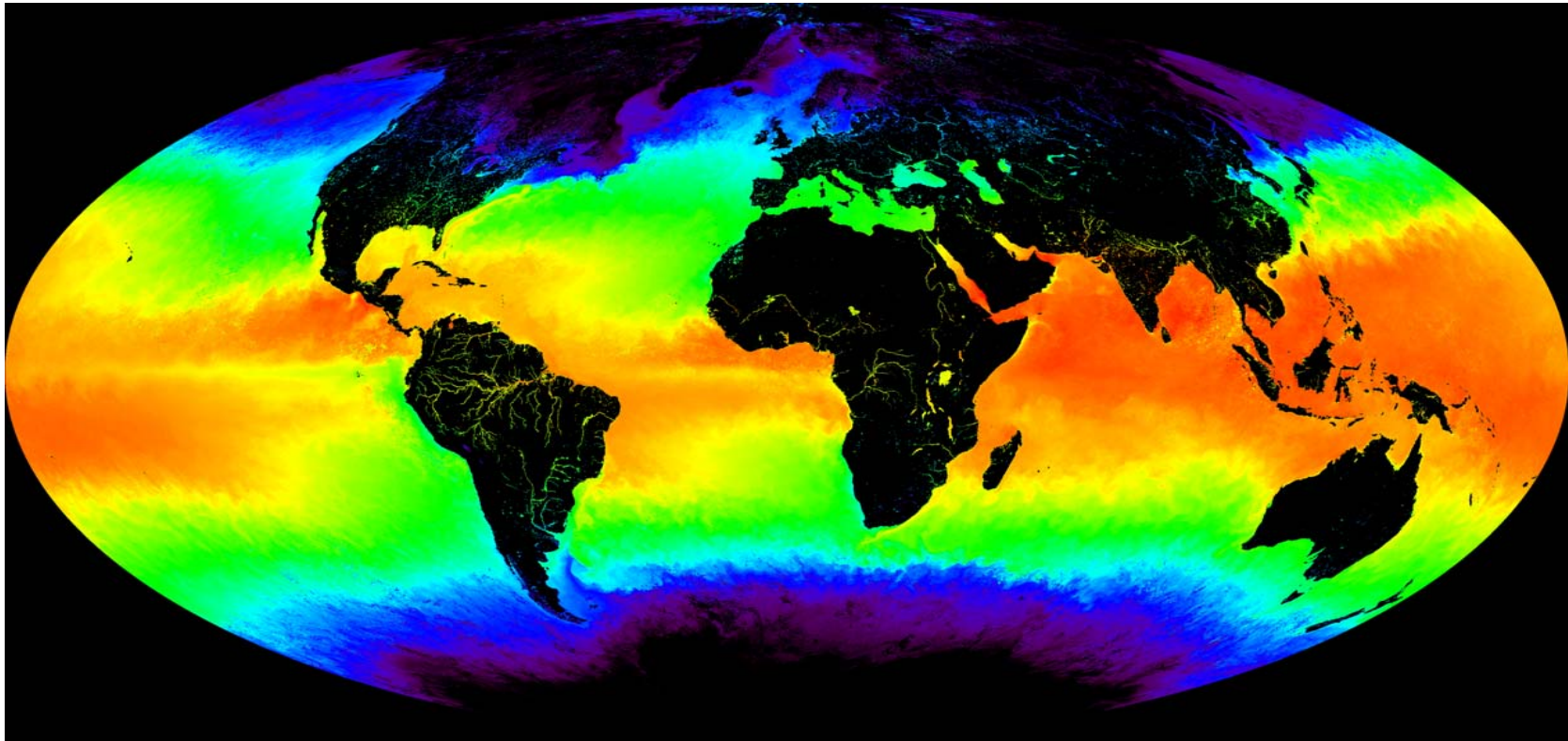
SST measurements reflect air and sea interactions, a key factor in understanding climate and climate change:

- Modern Heritage: AVHRR technologies developed at NASA and used operationally by NOAA.
- Next Generation: All-weather microwave SST (e.g. TRMM Microwave Imager and Aqua-AMSR-E) and high resolution infrared (e.g. MODIS on Terra and Aqua satellites.)
- Research activity (GHRSSST) to understand the signal from infrared and microwave instruments :
 - intercomparison and validation across temporal and spatial scales
 - target resolution of 1-2km in coastal zones, 5-10km in open ocean, with accuracy of 0.3-0.4°C

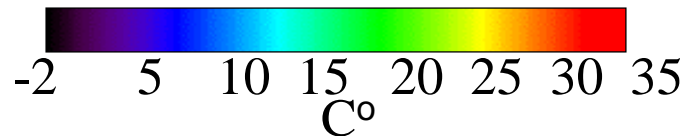




MODIS Sea Surface Temperature



MODIS Terra Nighttime SST,
4am, May 2001



Exploring Our Ocean Planet from Space



NASA Oceanography
oceans.nasa.gov



Ocean Surface Vector Wind

Allows for better weather analysis and provides accurate forcing for ocean models:

- Modern Heritage: NSCAT mission followed by SeaWinds on QuikSCAT.
- Successive missions targeted toward measurement and technology that can be used operationally.
- Next Generation - Ocean Vector Winds Mission will be smaller and lighter.



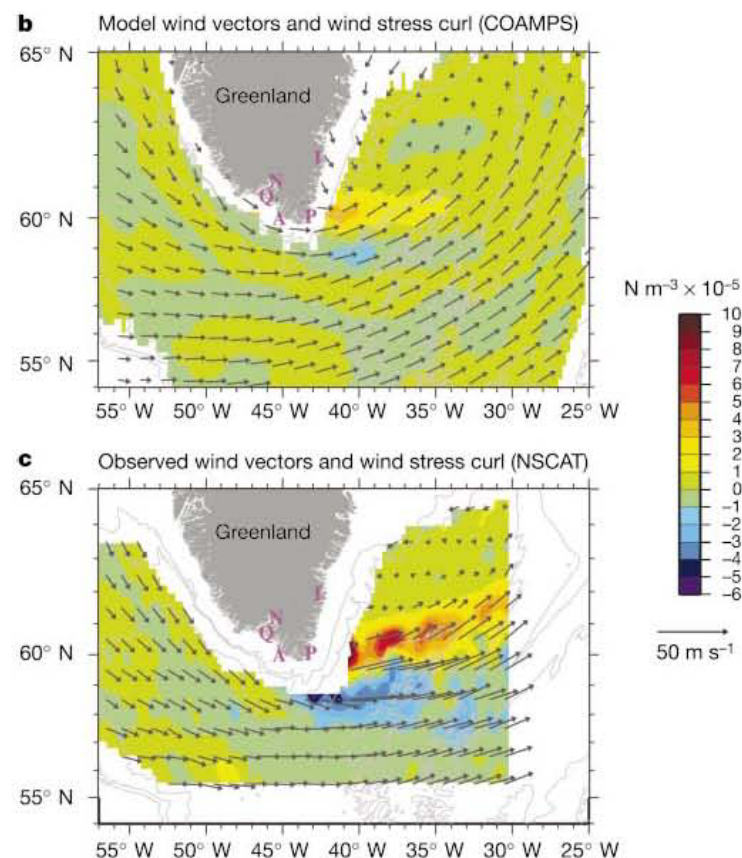
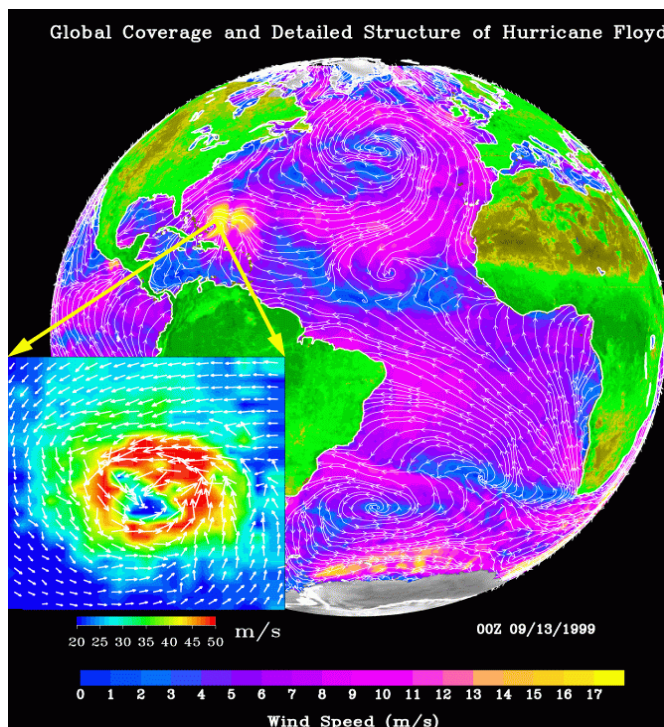
Wind Vector: Scatterometry

Global Weather and Marine Storms

- Synoptic view of the winds over global ocean
- Improved weather forecast
- Detailed structure of marine storms
- Wind-driven ocean circulation and ecological changes

Greenland Tip Jet, Pickart et al, *Nature*, July, 2003

Hurricane Floyd, 1999





Ocean Surface Topography

Used to explore the ocean's response to wind and buoyancy forcing:

- Modern Heritage: TOPEX/Poseidon development and improvement of altimetry in cooperation with the French space agency.
- Next Generation:
 - Jason-1 (launched 12/7/2001.)
 - Ocean Surface Topography Mission (circa 2007-8)
- Numerous applications: Improves global climate predictions, fish harvesting, circulation simulation.

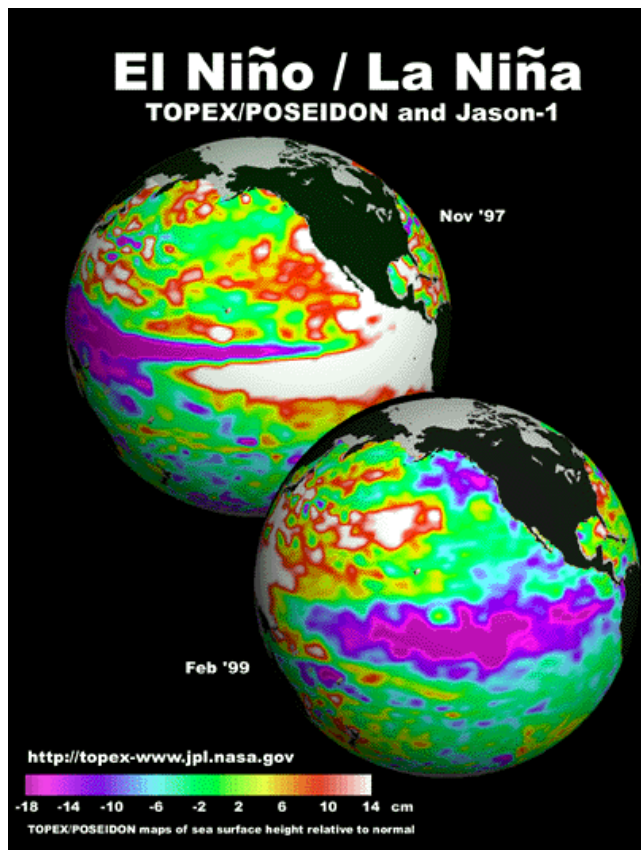




Ocean Topography From Altimetry

El Niño / La Niña

The early detection of the 1997-98 El Niño was a great success of the mission. The loss of lives and property from the strongest El Niño on record was kept to a minimum owing to the early warnings. The data have been routinely used by NOAA to improve the forecast of El Niño and other climatic events.



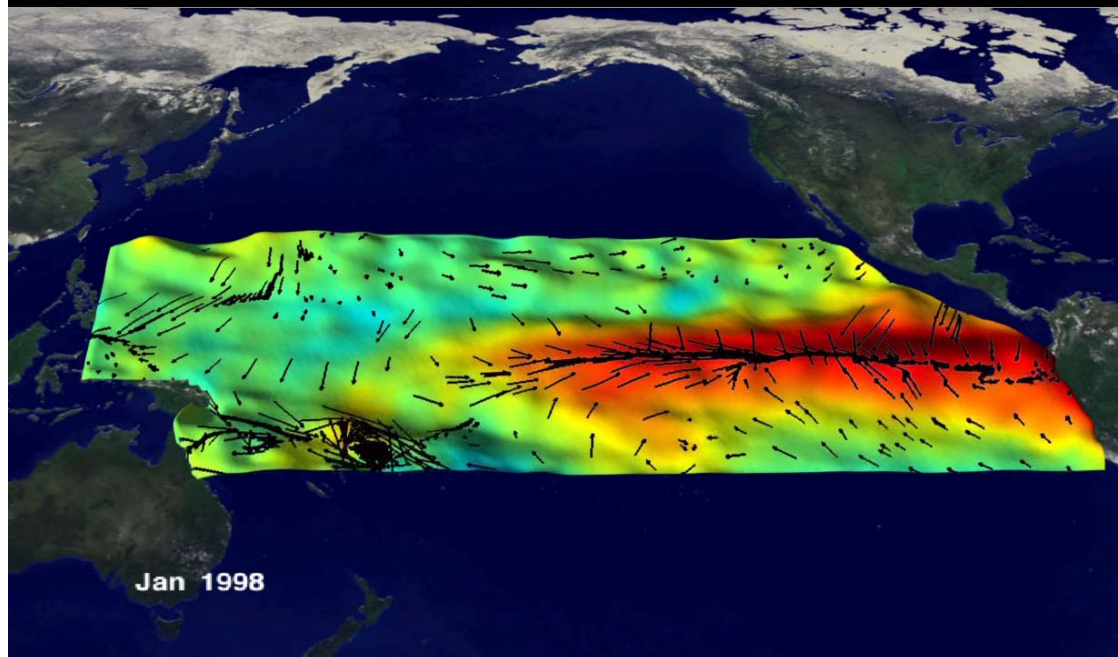
TOPEX/Poseidon Ocean topography of the Pacific Ocean during El Niño and La Niña.

- **Red and orange** represent highs;
- **Purple and blue** represent lows.

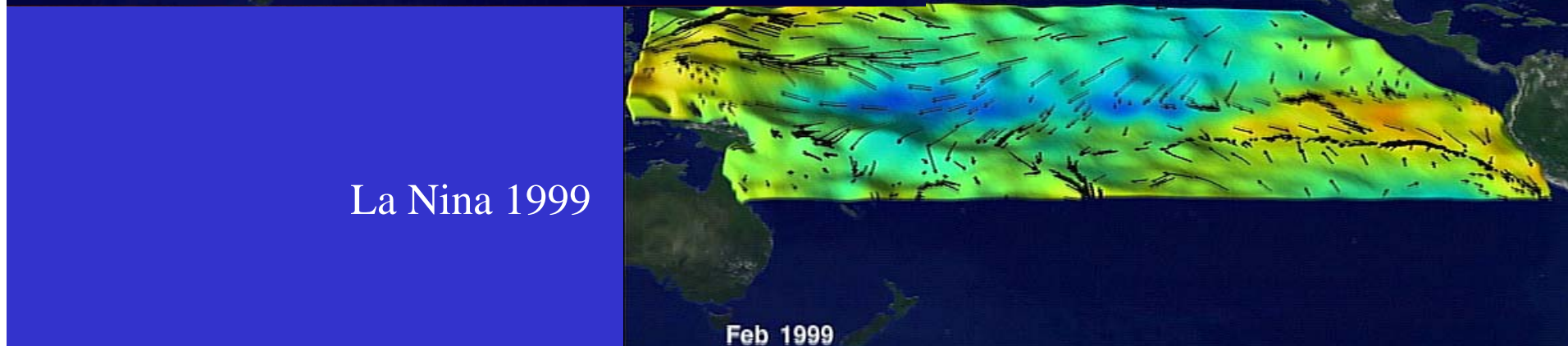




SSH from TOPEX/Poseidon and Anomalous Wind Vectors from SSM/I (Courtesy of D. Adamec/GSFC)



El Nino 1997-1998



La Nina 1999





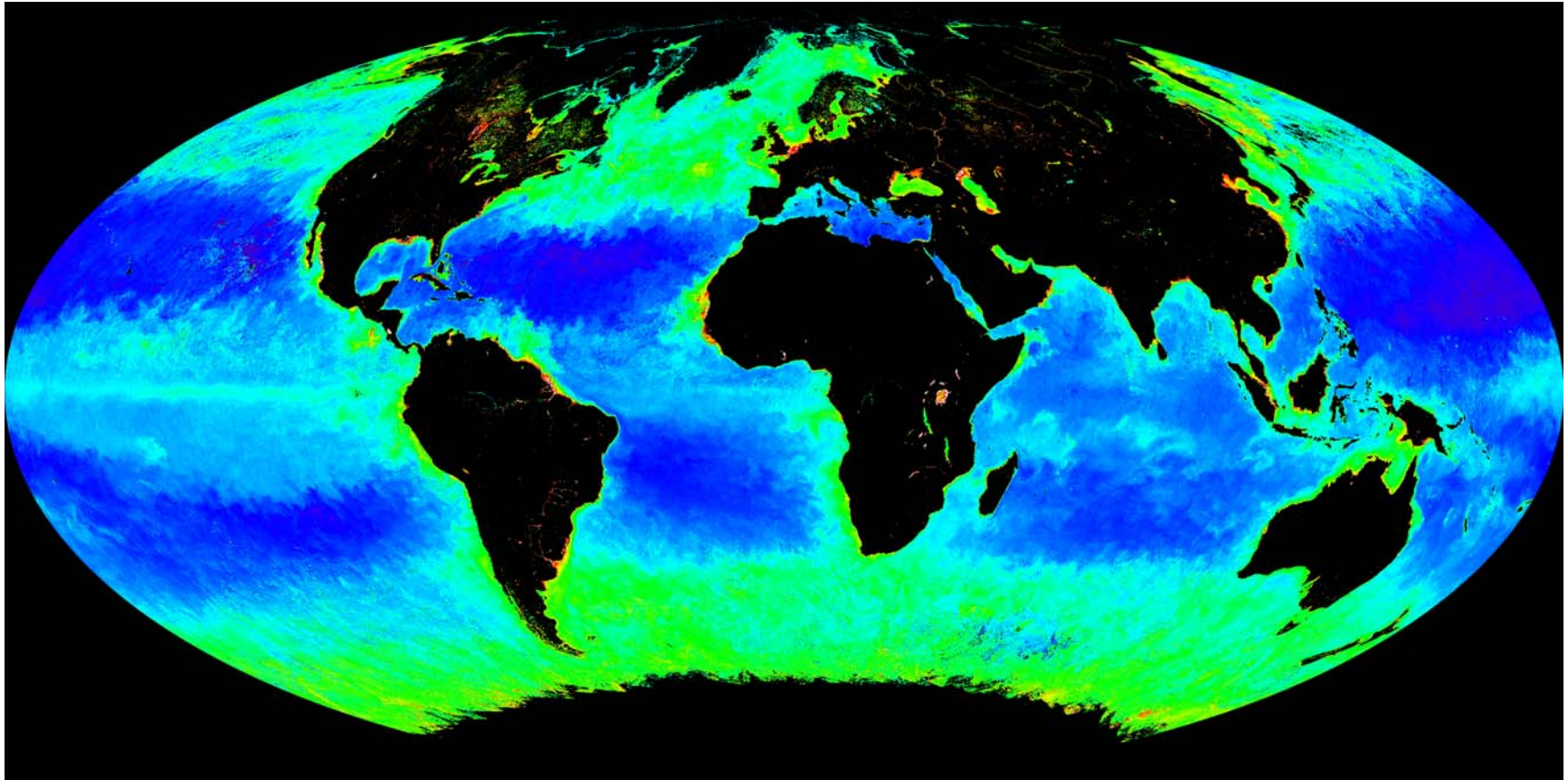
Ocean Color

Used to estimate the chlorophyll-a in the ocean and investigate the global carbon cycle:

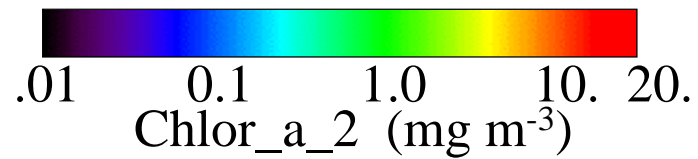
- Modern Heritage: SeaWiFS and MODIS on Terra.
- Next Generation: Sensors with finer resolution, better algorithms, and more spectral resolution.
- Numerous applications: Ocean productivity, fisheries, plankton dynamics.



MODIS Chlorophyll-a



MODIS Terra, May 2001

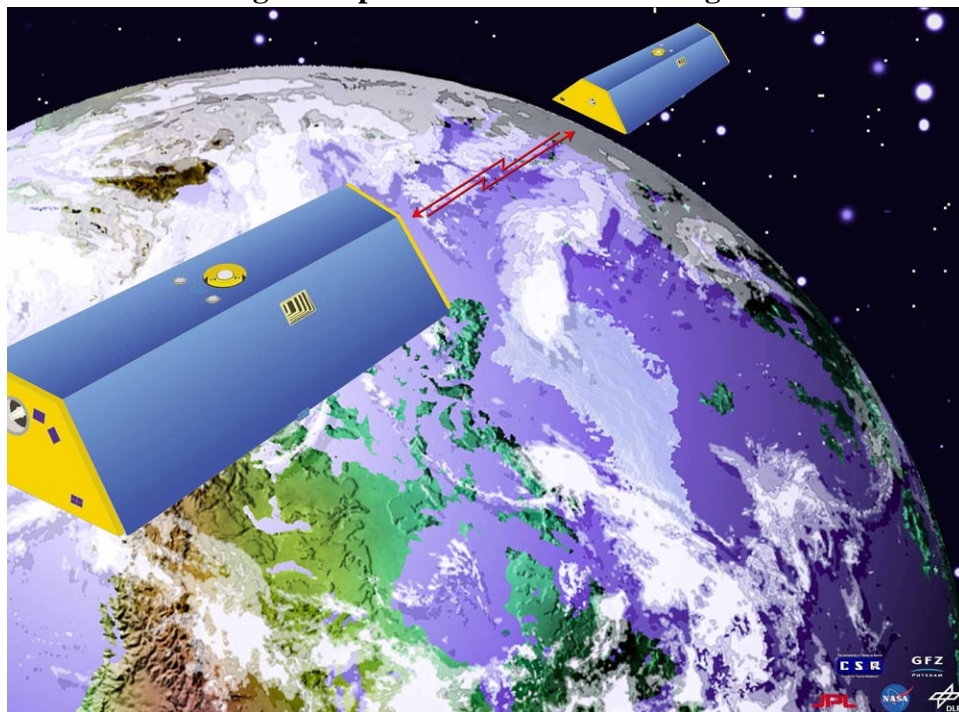




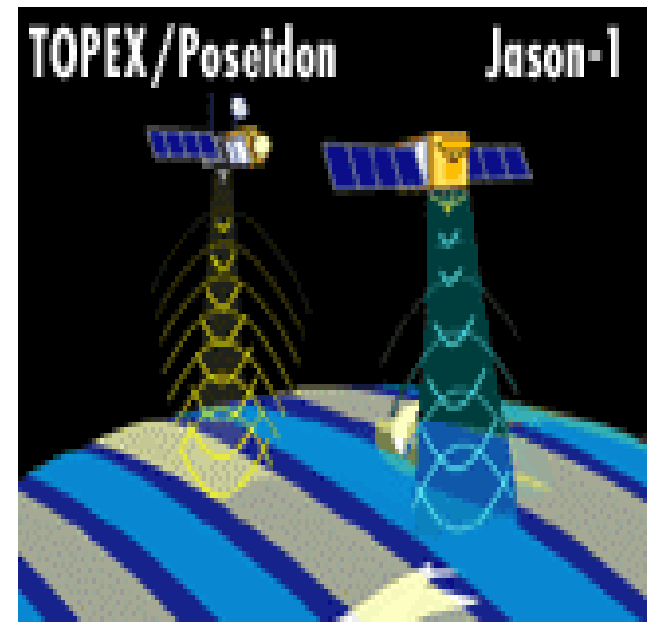
Ocean gravity and mass

GRACE

- measuring the changing mass of polar ice caps;
- measuring changes in water resources on land
- understanding shallow and deep ocean current transport;
- understanding sea level change resulting from ocean temperature and water mass changes;
- understanding atmosphere-ocean mass exchange



TIDE GAUGES AND ALTIMETRY



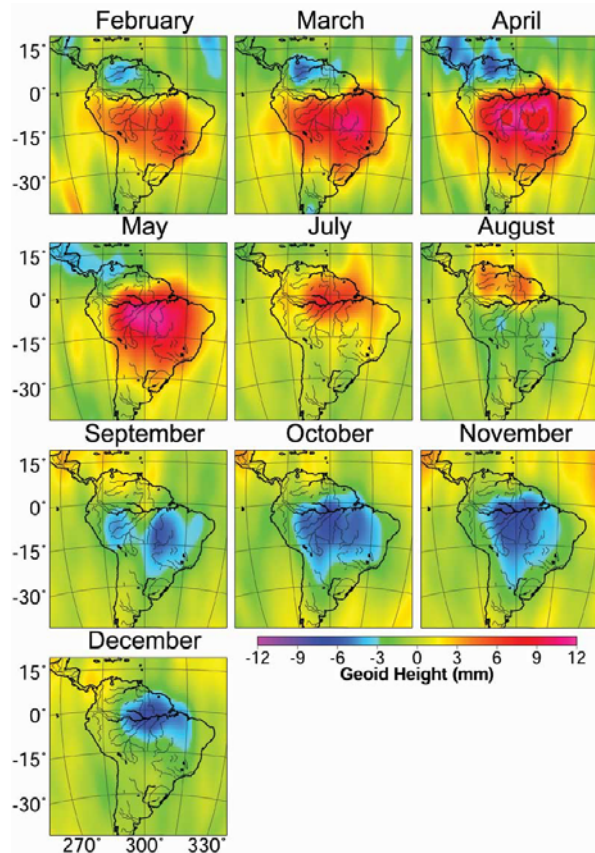
Exploring Our Ocean Planet from Space



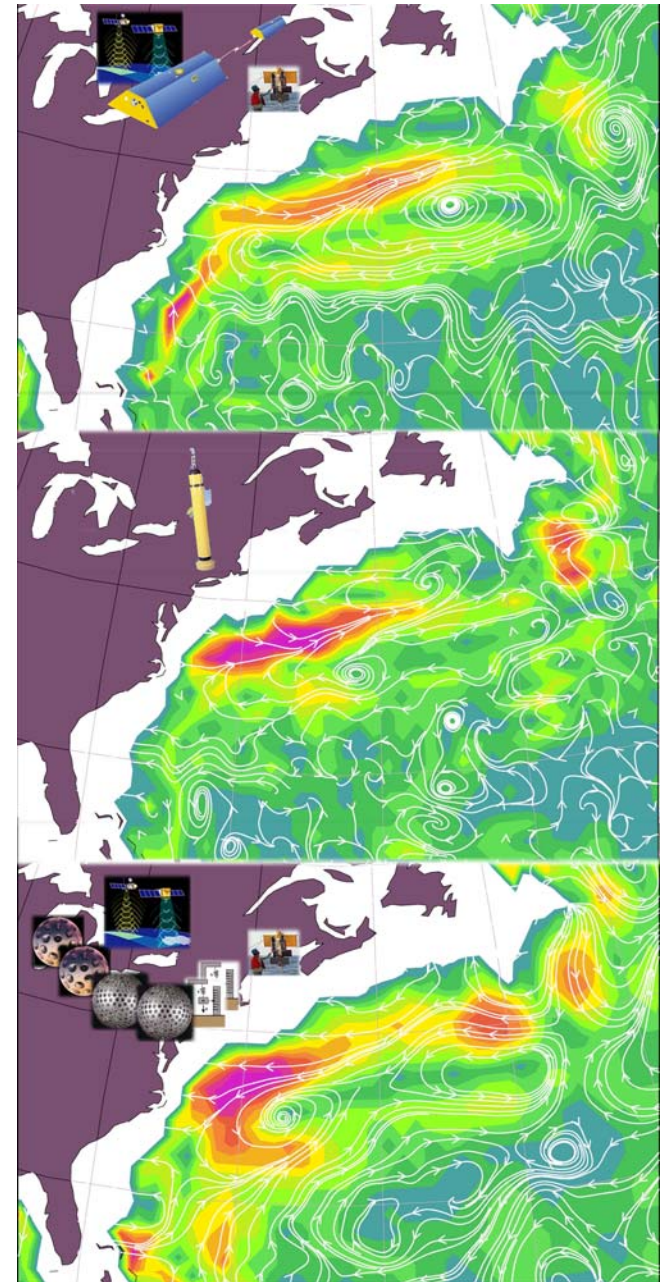
NASA Oceanography
oceans.nasa.gov

Results from GRACE:

Below: Seasonal change in ground water storage in South America, from Tapley et al, *Science*, July 2004



Right: Gulf Stream currents at 1000 meter depth
Top: Derived from altimetry, GRACE gravity model and ship measurements
Middle: From in situ measurements (floats)
Bottom: Same as top but earlier Gravity model information
Credit: NASA JPL





Sea Surface Salinity

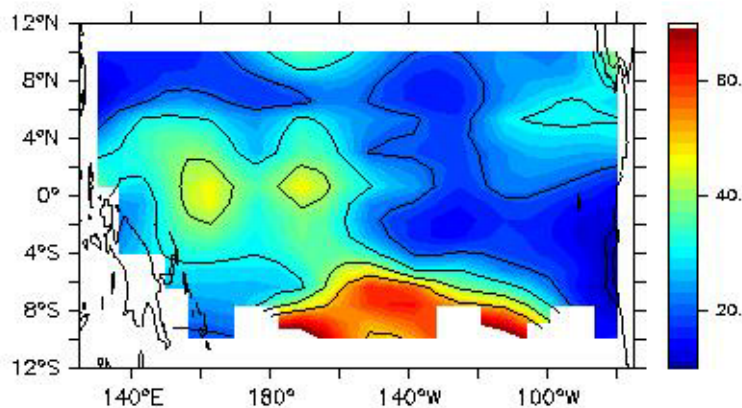
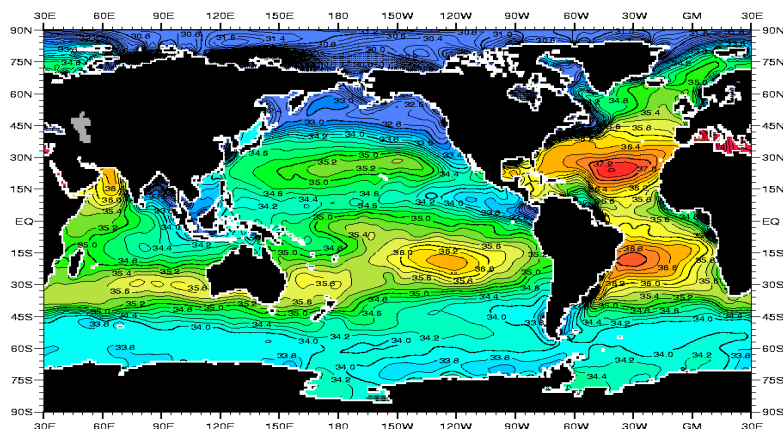
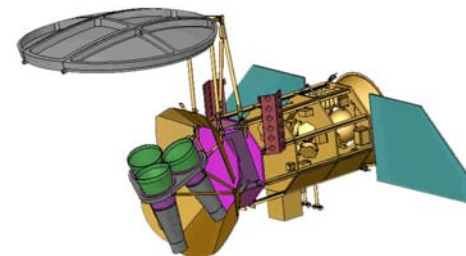
Future mission- Aquarius: Aims to explore the variability of surface salinity in the oceans.

- Requires improved antennas, signal processing, and algorithms.
- Remotely sensed salinity data will greatly improve our knowledge of an important driver of significant climate signals.
- Joint mission with CONAE: NASA will provide the L-band radiometer/scatterometer and launch vehicle, CONAE will provide the integrated satellite platform with SAC-D science instruments
- Planned launch date September 2008



QuickTime™ and a
TIFF (Uncompressed) decompressor
are needed to see this picture.

/SAC-D



*Percentage of dynamic height variability due
to salinity (Maes and Behringer, 2000).*

Science Themes

Hydrological cycle

- Salinity is the key variable to understand the fresh water cycle in the ocean

Ocean & Climate

- Salinity is a key variable to determine the density that drives ocean circulation to impact climate

Measurement requirements

- 0.2 PSU, 100-km footprint, weekly

Science Rationale

- The effect of salinity is comparable to the effect of temperature.
- Salinity can be used to improve El Nino prediction

QuickTime™ and a
TIFF (Uncompressed) decompr
are needed to see this picture

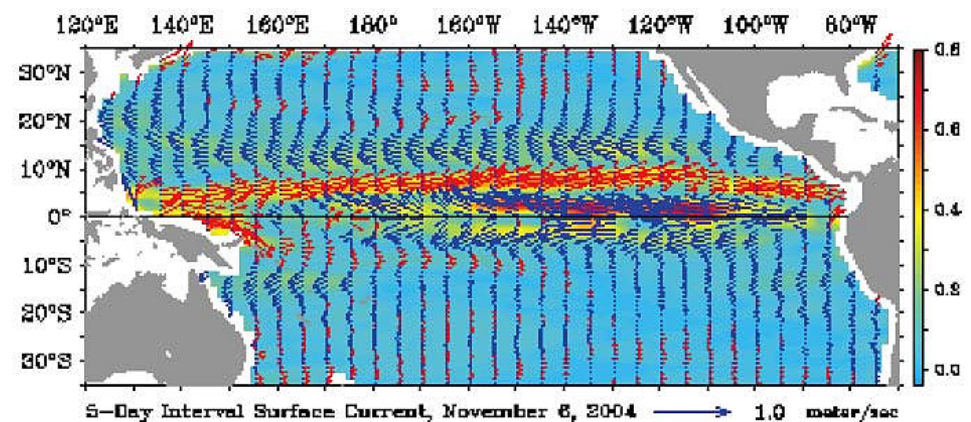


QuickTime™ and a
TIFF (Uncompressed) decompressor
are needed to see this picture.



Derived Products : Multi-Sensor and Merged Satellite and In Situ Data Sets

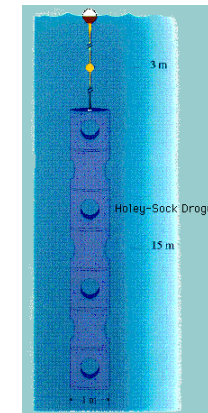
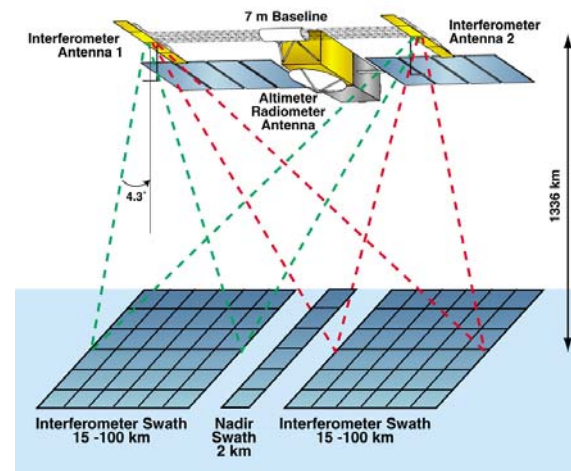
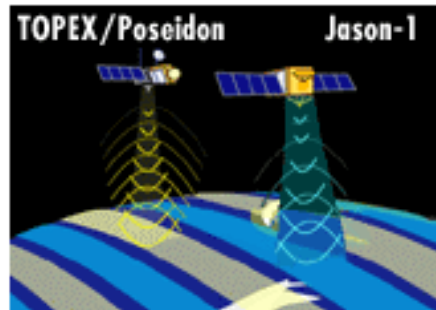
- Ocean surface currents
 - altimetry, drifters, ARGO floats
(OSCAR-product)



- Ocean deep currents
 - altimetry, GRACE gravity, in situ hydrography,
ARGO floats



Ocean Currents :



T/P and Jason tandem mission, Wide Swath altimeter
Drifters, ARGO, GRACE



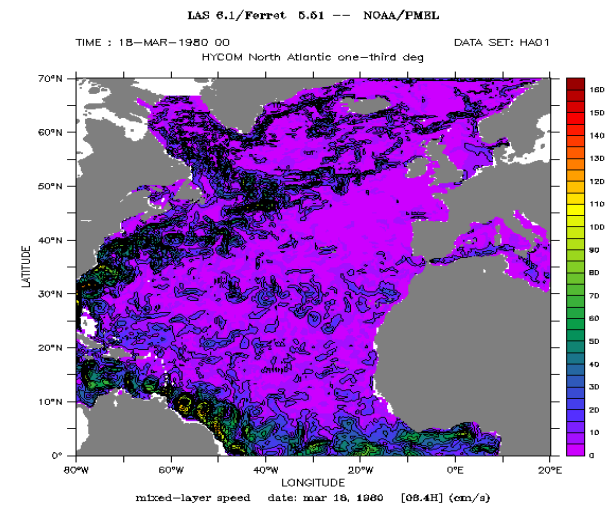
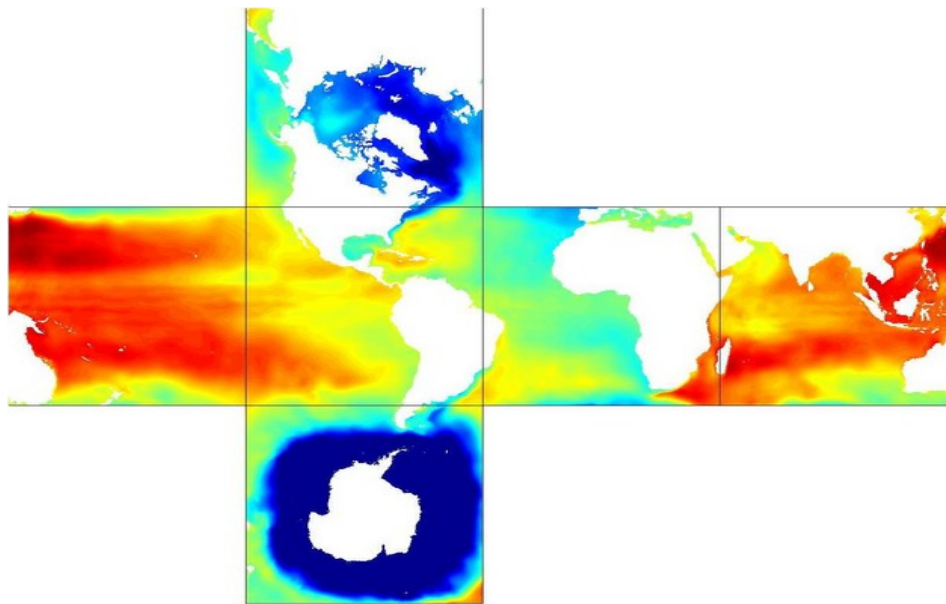
Application of Science

- NSIPP (NASA Seasonal-to-Interannual Prediction Project): a productive partnership of NASA GSFC and the University community to advance national climate prediction capabilities.
- NOPP (National Oceanographic Partnership Program): Data assimilation and climate prediction projects serving as pathfinders and tool developers for a wide array of applications.
 - ECCO consortium for ocean state estimation
- IGOS (Integrated Global Observing Strategy): An international partnership enabling development of an integrated ocean observing system.
 - Global Ocean Data Assimilation Experiment (GODAE) a practical demonstration of near-real-time, global ocean data assimilation.



Data Assimilation: Integrated Products

GODAE – ECCO, HYCOM, MERCATOR





NASA Interests in Technology Development

- Instrument development beyond exploratory missions:
 - Salinity , mixed layer depth
 - High resolution measurements: SST, OST, time variable gravity
- Improved numerical models of the ocean.
- Data assimilation techniques.
- High-performance supercomputer applications.
- Enabling access to large data sets





Frameworks for International Collaboration

- The development of a **global** network for ocean observing platforms, products, and services - **IGOS**
- Ocean state analysis - **GHR SST - GODAE**
- The ocean **research** enterprise **and** the development of “**operational**” oceanography are tightly linked
 - creation of research quality data sets - creation of the climate record - through reprocessing and
 - **VALIDATION**





Earth Science Enterprise
National Aeronautics and Space Administration



Exploring Our Ocean Planet from Space



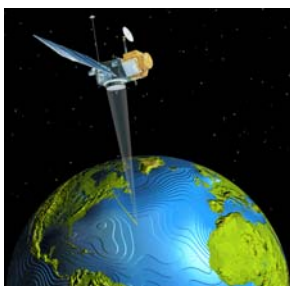
NASA Oceanography
oceans.nasa.gov



Data Assimilation : The Ultimate Synthesis

Data assimilation is the conduit of information between the observing systems and the user community.

Observing
Systems



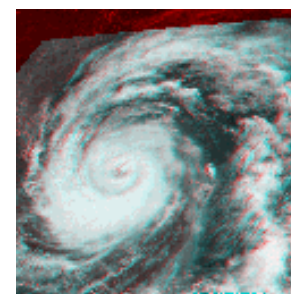
Data

Computer
Ocean
Models



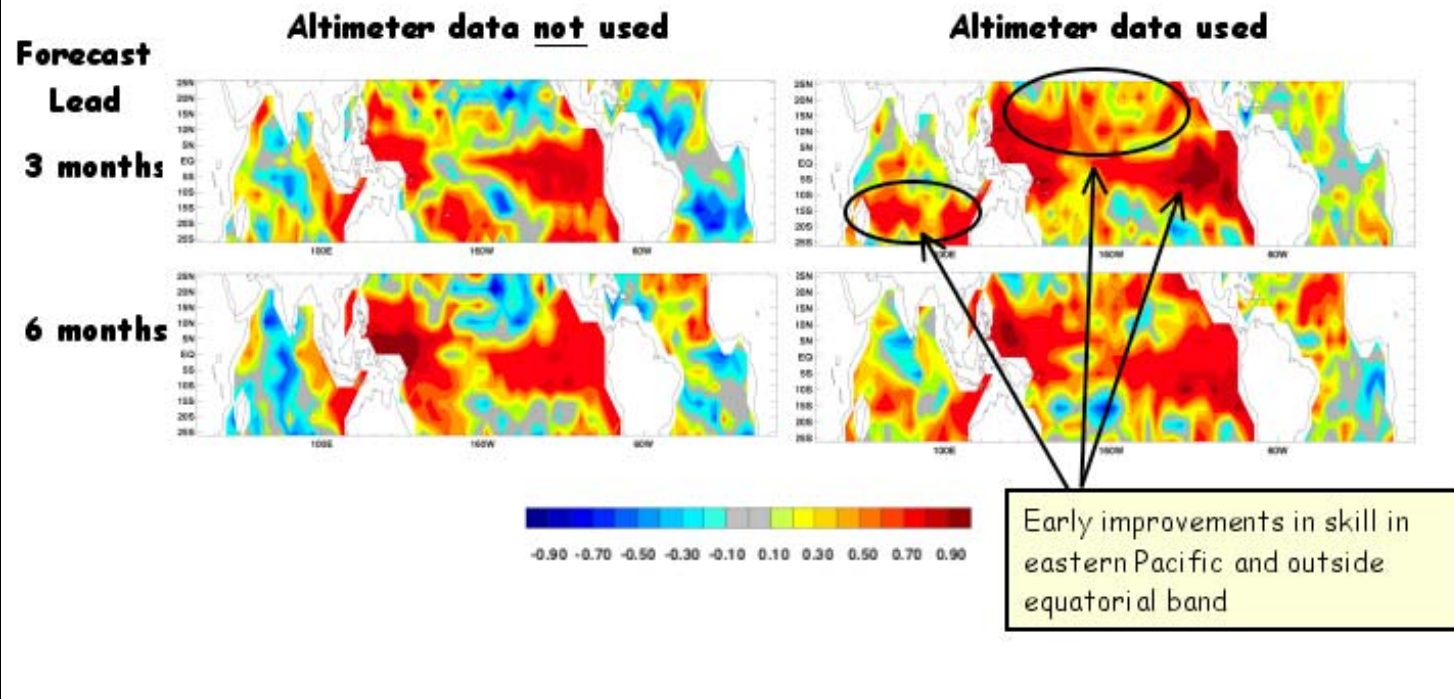
*Synthesis
Products*

User
Community



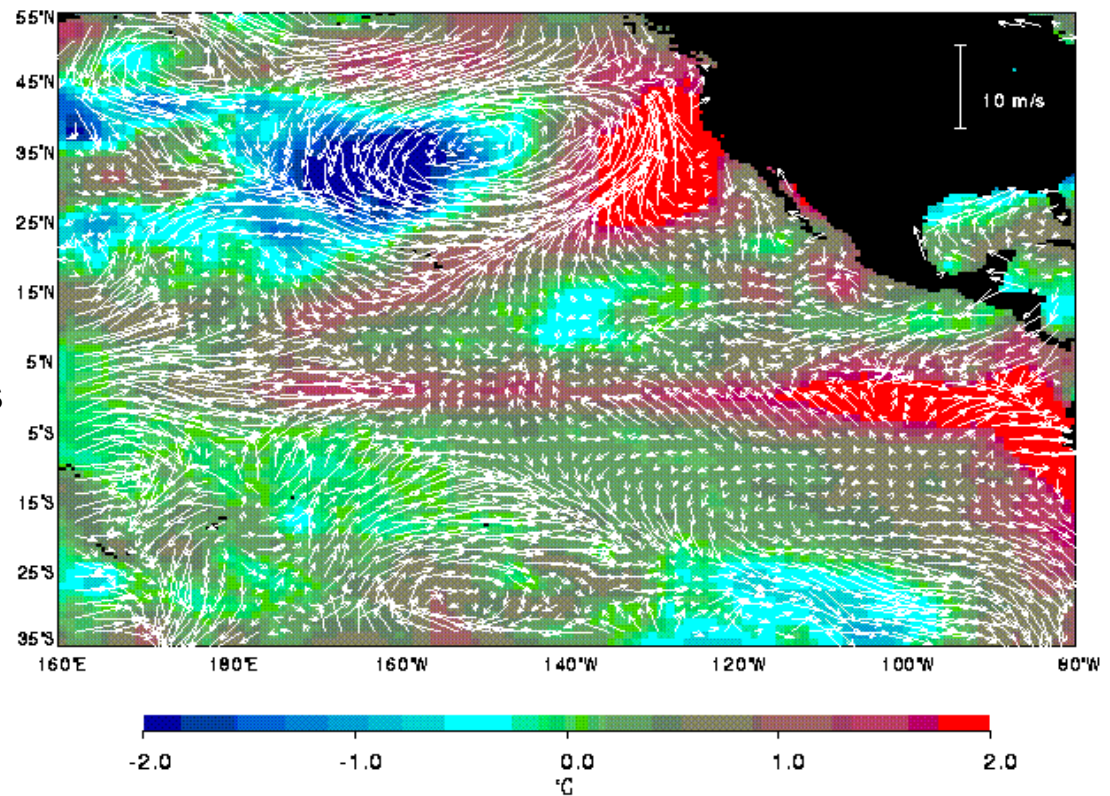
DATA ASSIMILATION: USE OF ALTIMETRY IN ENSO PREDICTION

(from D. Adamec/GSFC)



Wind, Air-Sea Interaction tie Timescales, Physics and Biology

- El Nino (equatorial Pacific warming, timescale: a few years) preceded by trade winds collapse, and westerly wind burst (timescale: a few days).
- Westerly wind burst is connected to super cloud clusters and convection. Timescale: sub-daily
- A branch of the equatorial winds, as part of the displaced anticlockwise flow, brings warm and moist air to the U.S. west coast
- The displacement of atmospheric circulation shifts the position of the decadal ocean temperature dipoles, with strong ecological effect to coastal water.



[Liu, W.T., W. Tang, and H. Hu, *Eos Trans. AGU*, 79, 249 & 252, 1998]



SST Research activity (GHRSSST-PP)

- Characterize the quality of existing satellite and in situ SST data sources through validation exercises and identify differences between them by inter-comparison at local, regional and global spatial scales and for daily, weekly and monthly temporal scales.
- Develop data integration and assimilation methods that exploit existing SST datasets through data merging/fusion in order to generate improved multi-sensor SST products.

AVHRR

AMSR-E

QuickTime™ and a
TIFF (Uncompressed) decompressor
are needed to see this picture.

CTL= CONSTANT
TEMPERATURE
LAYER



Measurement Path From Research to Operational Use

